



idiosyncratic collection with surprising value for a meeting's focus surprisingly affordable

what is opal hotel collection?

the hotels and resorts included for your review are independents, are idiosyncratic, unique, and **meeting planner friendly**. our team is intimately familiar with the hotels. we are an extension of the on-property teams - not just hired guns.

we are a group of mature, dedicated professionals. we are hotel advisors.

we only want the best fit each and every time and will not recommend a property unless it absolutely meets all your needs. in fact, 3 of us have been in catering and convention services and 3 of us have even been meeting planners in past lives. together, we have taken care of meeting planners for decades and decades; some have the gray hair to show those decades.

we stay with you through every step of the process to ensure smooth sailing.

our collection has solid owners and fine management who value training and taking care of their staff.

hence, their teams are extremely dedicated and are not satisfied with less than perfection for your experience.

our community involvement

5% of **opal hotel collection's** revenue is donated to panetière partners - our own charity that is dedicated to improving the lives of disenfranchised children in India through empowerment & education, combined with an awareness and engagement campaign for American youth to encourage them to be cross culturally aware and create volunteers of the future. The program can be viewed at www.panetierepartners.org.



who will be taking care of you?

- joann davis, jdavis@opalmeetings.com

senior sales advisor tour and travel- joann is an avid plane lover and living as she does in Reno, she is a volunteer for the air races and also volunteers at Veterans Guest House which provides Veterans accommodations during times of medical needs | volunteers at the NTA convention | her favorite place - Cannon Beach, Oregon | 25 years experience | reno based



shannon



kara



joann

- wendy kivitz, wkivitz@opalmeetings.com

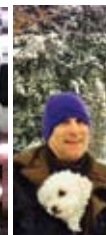
senior sales and training advisor, group, tour & travel, corporate - wendy is mom to two teenage boys, plays tennis, enjoys skiing, and dabbles in yoga. Husband Wayne loves to travel and constantly plans adventures for the family | favorite place - Grand Cayman | 25 years experience based



garrett



cindy



eric

- kara latham, klatham@opalmeetings.com

senior sales advisor - kara is mom to a young boy and girl. her creativity has led her to an interest in fashion. she volunteers in fund raising for Rocky Mountain ALS. summers usually take her back to the east coast for a spell on the jersey shore. | favorite place - Palm Cove, Australia | 15 years experience | denver based

- shannon minton, sminton@opalmeetings.com

senior sales manager - shannon is a mother of three - all girls, ranging from the teens to the wee babe | most weekends find her feeding the homeless of denver | her favorite place - Santa Barbara with her children & husband - biking, exploring, wineries, artist shows | 17 years experience | denver based



wendy

- cindy perkins, cperkins@opalmeetings.com

director of sales along with f & b and catering specialist, event & meeting planner in a previous life - cindy is an avid car lover, cat and dog adorer, and always trying to reconcile her meeting planner life with her hotel advisor life here at opal | favorite place - anywhere with water | 20 years experience | denver based

- garrett schwab, gschwab@opalmeetings.com

senior sales advisor along with event - meeting planner & catering specialist in a previous life - garrett is also an avid dog lover with 2 spoiled weimeraners, a passion for the kentucky derby, a bad car habit with a land rover in the garage. | favorite place - still searching | 24 years experience. | dallas/ft. worth based

- eric von starck, evonstarck@opalmeetings.com

senior sales advisor along with f & b and catering specialist, event & meeting planner in a previous life - eric is a hiker, biker, jogger, kayaker, dog lover and wants to know when he is going to get time to do all these things this year? | favorite place - crested butte & kootenai forest, canada | 27 years experience | denver based

www.opalmeetings.com

opal hotel collection: US + | 800 965 8940 | hello@opalmeetings.com | skype: cpanetiere



idiosyncratic collection with surprising value for a meeting's focus surprisingly affordable



city - locale New York City - East Side - just East of Park Ave & just north of Grand Central

style classic boutique - refined | sense exclusivity | sophisticated | renovation from quiet, refined residential hotel

most useful to a planner for small meetings with a local attendance component and for which you want refined superior, quiet luxury accommodations without the baggage of a deluxe name brand | truly refined service

hotel name The Benjamin - 4 Star ★★★★★

address 125 East 50th Street, New York, NY 10022 | Lexington Ave and 50th

location benefits residential "Park Ave" exclusive feel yet all of NYC available on Lex Ave subway line

opal hotel senior sales cindy perkins, director | tel US +1 800 965 8940 cperkins@opalmeetings.com

unique features pet friendly | residential | exclusive boutique with a sense of refined grandeur - an enclave feeling | Five-Globe ECOTEL

amenities kitchens | 12 choice pillow menu | all the usual luxury goodies including Bose radios &, of course, Frette sheets

restaurants one > classic refined yet "active" NYC restaurant environment with private space

activities all NYC activities are out the front door

guest rooms 209 > 48 guest rooms (250 sf) | 64 studio suites (350 sf) | 96 one bedroom suites (550 sf) | 1 two bedroom suite

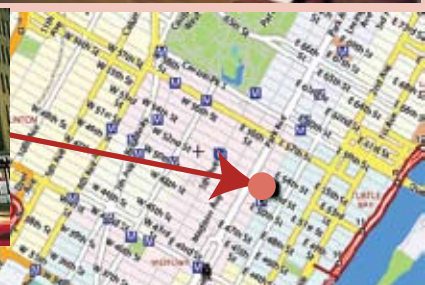
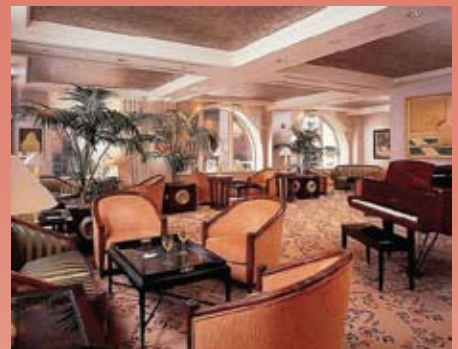
meeting spaces 2000 sq ft > 3 spaces or 7 with airwalls | one with 1200 sf can be split into 4 - with natural light - airy with mezzanine moon windows | 1 boardroom with 276 sf | PLUS large mezzanine lobby adjacent - isolated and private with 576 sf - with moon windows | 110 ppl max

audio visual full facilities in-house

airport & drive air: all NYC airports | all Amtrak trains in NE corridor

eco-environment one of only four "Five-Globe ECOTEL" certified properties in the world. environmental responsibility is a core philosophy.

community responsibility from opal meetings - 5% of revenue is donated to our own volunteer charity foundation - **panetière partners** improving lives through empowerment & education



www.opalmeetings.com

opal hotel collection: US + 1 800 965 8940 | hello@opalmeetings.com | skype: cpanetiere

values & affordability



idiosyncratic collection with surprising value for a meeting's focus surprisingly affordable



Meeting

city - locale New York City - Manhattan East Side Murray Hill - Lexington & 38th

style 2009 renovated 1920's apartment building - sense of living in NYC | not in the middle of hustle-bustle | sleek - international modern boutique | extra large rooms with galley kitchens

most useful to a planner for Murray Hill small meetings | combined with superior large accommodations at value rates | meetings might have NYC component and a need for fine accommodations for outside participants

hotel name Affinia Shelburne 3.5 Star ★★☆☆

address 303 Lexington Avenue, New York, NY 10016 - Lexington & 38th - one block off Park Ave

location benefits residential feel yet all of NYC available on Lex Ave subway line

opal hotel senior sales cindy perkins, director | tel US +1 800 965 8940 cperkins@opalmeetings.com

unique features pet friendly | residential | sleek boutique

amenities galley kitchens | 6 Dream Pillow Menu for pillow perfection | "Affinia Experience" Kits | Stuffed animal on pillow | Walking Tour | StayFit Kit | Travel Smart Kit for those items you may have forgotten

restaurants one > Rare Bar and Grill | plus rooftop lounge

activities all NYC activities are out the front door

guest rooms 268 studio to two bedroom suites | all the usual plus dream pillow menu | Aveda bath products

meeting spaces 1,950 sq ft total | space one is 1275 sq ft | space two is 675 | plus another 900 sq ft rooftop event space with garden - views of Chrysler Building - rumor has it that Fred Astaire had a miniature golf course here | 60 pp max

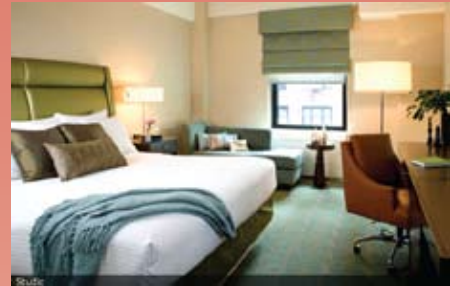
audio visual full facilities in-house

airport & drive air: all NYC airports | all Amtrak trains in NE corridor

community responsibility from opal meetings - 5% of revenue is donated to our own volunteer charity foundation - **panetière partners:** improving lives through empowerment & education



Comfort meets cool at Affinia Shelburne



Studio



bedroom suite - Living Room



values & affordability

www.opalmeetings.com

opal hotel collection: US + 1 800 965 8940 | hello@opalmeetings.com | skype: cpanetiere



idiosyncratic collection with surprising value for a meeting's focus surprisingly affordable



city - locale New York City - Manhattan
Opposite Madison Sq Garden - 7th Ave & 31st St

style 1920's style classic hotel - moderate level finish with elegant additions
huge suites & studios with full kitchens, rooms, & corridors

most useful to a planner for affordable - prime location | large guest rooms | large, medium level events that can make use of large classic ballroom and 8 smaller mezzanine & upper floor spaces | trainings | sales gatherings | easy train access North East Corridor | pre or post events at Madison Sq Garden

hotel name Affinia Manhattan 3 Star ★★★

address 371 Seventh Avenue, New York, NY 10001 | 7th Ave & 31st - by Penn Station and Madison Sq Garden

location benefits for a group - at a glance by transport hub > next to Madison Sq Garden, Penn Station, Lincoln Tunnel, Bus Hub | just blocks from Times Sq | all entertainment | restaurants

opal hotel senior sales cindy perkins, director | tel US +1 800 965 8940
cperkins@opalmeetings.com

unique features classic golden age hotel | marble, high ceilings | classic baroque ballroom with chandeliers - just renovated | extra large suites like apartments and extra large studios - all with full kitchens | spaces need to juggle pre-function and f & b arrangements

amenities full kitchens, suites with terraces | 6 Dream Pillow Menu for pillow perfection | "Affinia Experience" Kits | Stuffed gorilla on pillow | Walking Tour | StayFit Kit | Travel Smart Kit for those items you may have forgotten

restaurants one > Niles New York City Restaurant and Bar, sleek setting offering continental contemporary cuisine

activities to put it mildly - all NYC activities are out the front door

guest rooms 14 Guest rooms | 512 suites - ranging from studios to 2 bedroom | most with full kitchens | 28 floors

meeting spaces 9,000 total sq ft | 3,154 sq ft ballroom with small pre function but adjacent section of large lobby able to be isolated for group
8 smaller rooms on mezzanine and another floor | 300 pp max

audio visual full facilities in-house

airport & drive eco-environment air: all NYC airports | all Amtrak trains in NE corridor
planned to incorporate in 2011

community responsibility from opal meetings - 5% of revenue is donated to our own volunteer charity foundation - **panetière partners:** *improving lives through empowerment & education*



www.opalmeetings.com

opal hotel collection: US + 1 800 965 8940 | hello@opalmeetings.com | [skype: cppanetiere](https://www.skype.com/cppanetiere)

values & affordability



idiosyncratic collection with surprising value for a meeting's focus surprisingly affordable

city - locale Chicago - 1 1/2 blocks from Michigan Ave | 4 blocks from Chicago River | 5 1/2 blocks from Lake Shore

style sleek modern luxury | uncluttered simplicity | residential feel | ideal central location | "World's Best Hotel 2009" by Travel + Leisure

most useful to a planner for medium size meetings with refined superior, sleek luxury accommodations without the baggage of a deluxe name brand | truly refined service

hotel name The James Chicago - 4 Star ★★★★★

address 55 East Ontario Chicago, IL 60611 | Ontario and Wabash Ave

location benefits no car needed | heart of downtown cultural, restaurant and shopping district, walking distance to museums and attractions

opal hotel senior sales cindy perkins, director | tel US +1 800 965 8940 cperkins@opalmeetings.com

unique features "World's Best Hotel 2009" by Travel + Leisure | business service package includes complimentary meeting space, 24/7 business networking lounge with all the standard equipment; car service | carbon offsets available | city bikes

amenities full service spa, 24 hr 2,500 sq ft gym | 24 hr room service | twice daily housekeeping, turndown with treat | city bikes

restaurants one > fine dining – David Burke's Primehouse a redefined modern American steakhouse; 1- nighttime hot spot JBar

activities all the usual heart of city > shopping, dining, site seeing, Navy Pier adventures, sports, performing arts, museums, concerts in the park

guest rooms 297 guest room | 17 floors | contemporary layout, warm colors, city views | complimentary wireless internet | commissioned artwork

meeting spaces 7,000 sq ft total > 5 to 7 spaces depending on air wall use | 2,650 sq ft ballroom with 14 ft ceiling | then from 1200 sq ft to 450 sq ft | 220 pp max

audio visual in-house by PSAV

airport & drive air: Chicago O'Hare or Midway Airport – both 25 minutes | Taxi is \$30-\$50 | Airport Express is \$20-\$30 | Trains: Amtrak

eco-environment committed to respecting and protecting the environment through a number of progressive initiatives including tap water that is triple distilled as an alternative to bottled water plus all the usual: linen reduction, water reduction, recycling, and shampoo bottle donation | carbon offsets used with vendors

community responsibility from opal meetings - 5% of revenue is donated to our own volunteer charity foundation - **panetière partners: improving lives through empowerment & education**



www.opalmeetings.com

opal hotel collection: US + 1 800 965 8940 | hello@opalmeetings.com | skype: cpanetiere

values & affordability



idiosyncratic collection with surprising value for a meeting's focus surprisingly affordable

city - locale Austin, Texas, USA
style 1886 Historic Landmark with classic renovation 2005
hotel name The Driskill - 4 stars plus ★ ★ ★ ★ ★
address 604 Brazos Street, Austin, TX 78701

location benefits for a group - at a glance no car needed - heart of downtown | walk to capitol & business districts, museums, shops, restaurants, music - lots of music, venues, bars, Lady Bird Lake, hiking, biking, running trails

opal hotel senior sales cindy perkins, director | tel US +1 800 965 8940 — cperkins@opalmeetings.com



unique features redolent of texas history | historic character attracts dignitaries | many of the staff have been at the hotel for decades providing caring welcome - it is their hotel, their lives

amenities all the usual | 24 hr fitness | massage | turndown | shoeshine

restaurants 2 → one formal 4 diamond - ranked #1 in Austin | another informal café & bakery - a real "parlour" with patio + live music | bar that ranks as a classic Texas "watering hole"

activities from hotel: jogging, walking, swimming in spring fed pools | boutique shopping | theater | museums | music and more music

guest rooms guest rooms - 189
king 129 | dbl qn 46 | qn 14 | suites 14 | all with full mini-bar, robe, newspapers

meeting spaces total of 12 - 18,080 SF | Boardrm | 9 Meeting Rms - 364 to 1500 SF | 2 Ball Rms 2,500 & 1,875 SF | all Victorian historic in character

audio visual in-house by Swank Audio Visual

airport, train & drive information Bergstrom Airport - AUS - 10 mins
\$20 taxi - \$13 super shuttle
train - Amtrak's Texas Eagle route > Chicago to Los Angeles
2 mins off main interstate #35

eco-environment 25% locally grown products, water conservation, Green Seal®. cleaning products

community responsibility from opal - 5% of gross revenue donated to **panetière partners** - improving lives through empowerment & education



values & affordability

www.opalmeetings.com

opal hotel collection: US + 1 800 965 8940 | hello@opalmeetings.com | skype: cpanetiere



idiosyncratic collection with surprising value for a meeting's focus surprisingly affordable

city - locale Houston, Texas, USA
style 1911 Historic Landmark reborn as The ICON in 2004
hotel name Hotel ICON - 4 stars plus ★ ★ ★ ★ ★
address 220 Main Street, Houston, TX 77002

location benefits for a group - at a glance no car needed - heart of downtown financial, energy and legal district; on Metrorail line, close to restaurants, bars, shopping, sports complex

opal hotel senior sales cindy perkins, director | tel US +1 800 965 8940 — cperkins@opalmeetings.com



unique features neo-classical architecture combined with dynamic contemporary interior design | no car and few taxis needed | boutique "classical" style | Condé Nast top 100 Gold List | with the skills of Destination Hotels & Resorts as the management

amenities all the usual | 24 hr fitness | day spa & massage | turndown

restaurants 1 → VOICE - business casual - top 20 restaurant by Esquire Magazine

activities from hotel: boutique shopping | theater | museums | sports performing arts | nightclubs

guest rooms guest rooms: 135
king 90 | dbl full 18 | full 9 | suites 9 | all with full mini-bar, newspapers, complimentary internet

meeting spaces Total of 5 - 8,000 SF | 4 Meeting Rms | 1 Ball Rm 2,363 SF - all unique and private

audio visual in-house by Swank Audio Visual

airport, train & drive information Intercontinental - IAH - 30 mins - \$50 taxi | Hobby - HOU - 20 mins - \$40 taxi | Supershuttle \$25 | Amtrak - Sunset Ltd | Drive: 4 blks from US 90, 10, 45

eco-environment water conservation, Green Seal® cleaning products

community responsibility from **opal** - 5% of gross revenue donated to **panetière partners** - improving lives through empowerment & education



values & affordability

www.opalmeetings.com

opal hotel collection: US + 1 800 965 8940 | hello@opalmeetings.com | skype: cpanetiere



idiosyncratic collection with surprising value for a meeting's focus surprisingly affordable



city - locale in Grand Tetons National Park - Moran, WY, USA

style international modern by John Rockefeller - all about the mountains & the wildlife with hotel rooms and cottages | the elk out-number the people | grizzlies, wolves, moose are visible from lodge | can be an exclusive buy-out

hotel name Jackson Lake Lodge - 3.5 Stars ******* < | early may - late oct

address Grand Teton Lodging Co, Box 250, Moran, WY

location benefits for a group - at a glance no car needed | easy access thru the Park & to Jackson Hole with shuttles | an activities concierge arranges all tours and outings | **"preserve - protect - inspire"** - our motto

opal hotel senior sales cindy perkins, director | tel US +1 800 965 8940 cperkins@opalmeetings.com

unique features seclusion, nature, back to basics | voted #1 National Park for wildlife viewing, exceptional and large meeting spaces | all activities right from site | Lodge is its own DMC > one stop shop

amenities all the usual - pool, hot tub | activities desk

restaurants 2 restaurants > a large lodge dining hall with murals & views of the wilderness | 1950's diner - Pioneer Grill - with soda fountain | plus Pool BBQ | plus grab n' go Coffee Cart

activities from hotel: - trail rides, hiking, painting, photography, rafting, fishing, boating, mountain climbing, wilderness excursions, wildlife viewing, biking | Yellowstone is also just 26 mi | Jackson Hole for galleries and shopping | horse whispering event

guest rooms 385; combination of lodge rooms, suites and cottages |

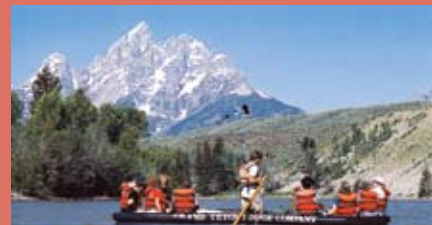
meeting spaces 17,000 sq feet; 17 breakouts; Ballroom; 4,380 square ft | terraces | outdoor BBQ on river | buy-outs for high security meetings - beginning & end of season

audio visual in house

airport & drive air: Jackson Hole (JAC) - 26 miles | \$45 shuttle

eco-environment certified ISO 14001 standards | green weddings | locally grown organic products | water conservation | encourage donation of event plants/flowers, food & other products to local nonprofits and food banks | carbon footprint offset available

community responsibility **from opal meetings** - 5% of revenue is donated to **our volunteer charity - panetière partners** - improving lives through empowerment & education



www.opalmeetings.com

opal hotel collection: US + 1 800 965 8940 | hello@opalmeetings.com | skype: cpanetiere

values & affordability



idiosyncratic collection with surprising value for a meeting's focus surprisingly affordable

city - locale Grand Tetons National Park - Teton Village, WY, USA - near Jackson Hole - but by the ski mountain & Tetons

style western cowboy mountain lodge immersed in Grand Tetons Mountain range

hotel name Snake River Lodge - 4 Stars ★★★★★ | 4 Diamond

address 7710 Granite Loop Road, Teton Village, WY 83025

location benefits for a group - at a glance no car needed - at base of ski mountain- easy access to Jackson Hole and one mile from Park | hiking, golfing, wildlife spotting, restaurants, bars, shopping, ski lifts

opal hotel senior sales cindy perkins, director | tel US +1 800 965 8940 cperkins@opalmeetings.com

unique features 4 Diamond - preferred tee times on private course with astonishing panorama of the Tetons | offsite venue options at base of Teton Mountains | 17,000 SF spa sanctuary

amenities all the usual - Avanyu Spa - pool indoor and out with waterfall rocks

restaurants 2 restaurants - one fireside lounge featuring bar menu; one for breakfast, lunch and dinner featuring chophouse menu at night

activities from hotel: 2 mintues from National Park entrance - galleries- restaurants - shopping - hiking - ballooning - golfing - tram rides - wildlife viewing - nightlife - fishing - biking - mountain climbing - trail rides - rafting - wilderness - horse whispering event

guest rooms 110 | Condominiums: 14 | all mountain inspired furnishings with robes, refrigerator, granite accents

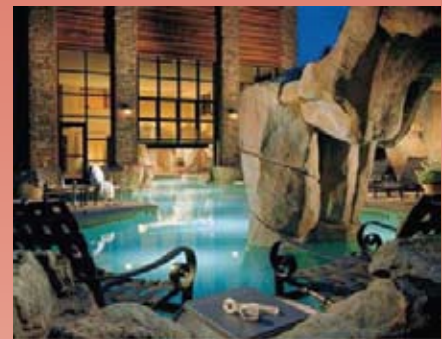
meeting spaces 5,500 sq feet total : ballroom - 2,350 square feet ; natural light

audio visual Jackson Hole AV

airport & drive air: Jackson Hole (JAC) - 20 minutes; \$16 shuttle

eco-environment green weddings | locally grown organic products | water conservation | encourage donation of event plants/flowers, food & other products to local nonprofits and food banks | carbon footprint offset available

community responsibility from opal - 5% of gross revenue donated to panetière partners - improving lives through empowerment & education



values & affordability

www.opalmeetings.com

opal hotel collection: US + 1 800 965 8940 | hello@opalmeetings.com | skype: cpanetiere



idiosyncratic collection with surprising value for a meeting's focus surprisingly affordable

city - locale Santa Fe, New Mexico, USA

style southwest adobe architecture - typical Santa Fe, abundant art - painting, sculpture

hotel name La Posada de Santa Fe - 4 Star Plus ★★★★★
4 Diamond

address 330 East Palace Avenue, Santa Fe, NM 8750

location benefits for a group - at a glance no car needed - heart of downtown | walk to galleries, shops, museums, restaurants, historic Plaza, bars, walking, running, biking and hiking trails

opal hotel senior sales garrett schwab | tel US +1 800 965 8940
gschwab@opalmeetings.com



unique features only 4 Diamond resort in Santa Fe, Adobe style architecture, located on a 6 acre resort campus with lush landscaping, seating areas with Kiva fireplaces

amenities all the usual | RockResort Spa & Fitness Ctr | turndown | pool

restaurants 3 → located in 19th century building | formal 4 diamond French inspired | casual lounge | Santa Fe casual

activities from hotel: jogging, walking, skiing, golfing, fishing, rafting, biking, hiking, x-country ski | galleries forever | boutique shopping | museums | pueblos 7 of them | nightlife | gourmet, thrilling food throughout the town



guest rooms guest rooms - 157
king 106 | dbl qn 20 | qn 31 | suites 30 | all with full mini-bar, robe, newspapers

meeting spaces total: 4,500 SF Conference Center | 2,950 Outdoor Event space | Ball Rm 2,048 SF

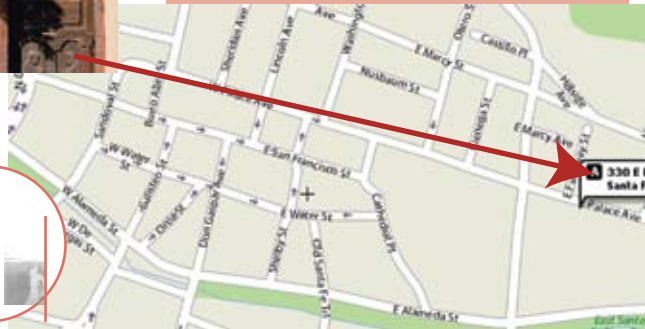
audio visual in-house by AV Systems

airport, train & drive information Albuquerque - ALB - 50 mins
\$25 shuttle | rail > Rail Runner Train-\$4 | drive > 5 mins from Rt #285, 84, 25



eco-environment 100% smoke free, water conservation, efficient lighting, Green Seal® cleaning products

community responsibility from opal - 5% of gross revenue donated to panetière partners - improving lives through empowerment & education



values & affordability

www.opalmeetings.com

opal hotel collection: US + 1 800 965 8940 | hello@opalmeetings.com | skype: cpanetiere



idiosyncratic collection with surprising value for a meeting's focus surprisingly affordable



city - locale Santa Fe, NM - the high desert on one side, mountains and skiing on the other | art all around

style adobe 1700s farmhouse and small houses -"casitas" on 35 acres of a 1700s Spanish land grant farm | with local art & sculpture | suitable for casual buy-out | no F&B on premises | superior family experience and enrichment | goats, donkeys, geese, chickens, peacocks

most useful to a planner for team building | low cost - low key incentives - not showy yet it is verging on miles of sacred desert cliffs and arroyos | no F&B - kitchens for catering to be brought in or team building pot-luck | self sufficiency needed

hotel name Rancho Jacona | 4.5 Star experience | no F&B | no housekeeping

address 18 miles north of Santa Fe, 12 miles east of Los Alamos: Pojuaque NM

location benefits for a group - at a glance isolated yet a 25 min drive to Santa Fe and Los Alamos | low cost | self sufficiency needed, please, although we will supply a senior sales manager to handle logistics coordination | mountains are on all sides of Rio Grande valley - 20 mins to get to them

opal hotel senior sales cindy perkins, director | tel US +1 800 965 8940 cperkins@opalmeetings.com

unique features seclusion - nature | back to basics yet in exceptional beauty and grace | not "luxury" - grace | set on 35 acres | small separate houses | adobe architecture, art, peace | force the participants to work together - be together and share houses together

amenities full kitchen, washer-dryer | fresh farm eggs every morning | roosters crowing in the distance | peacocks flocking under the ancient cottonwoods | catering can be arranged

restaurants none - catering can be arranged | Santa Fe is a restaurant town

activities at Rancho: flower naming, art looking, swimming, hiking, biking, domestic farm-yard | hiking | **nearby:** 3 native pueblos | art studios | mntn biking, skiing, cross country skiing | ancient pueblo mesa | Bandelier historic pueblo | Los Alamos labs & museum | spa rituals at 10,000 Waves Spa

guest rooms 11 houses with varied configurations - 30 beds | the suites & villas vary from one to three bedrooms

meeting spaces variously sized living rooms through the houses and the great room of the original rancho - suitable for 40 with all furnishing and art in place | tenting can be done in and around the gardens

audio visual supplied from Santa Fe

airport & drive air: Albuquerque NM 85 miles miles | 90 mins | jitneys available

eco-environment the entire ranch is a part of its environment - no specific actions

community responsibility from opal meetings - 5% of revenue is donated to our own volunteer charity foundation - **panetièrè partners:** *improving lives through empowerment & education*



values & affordability

www.opalmeetings.com

opal hotel collection: US + 1 800 965 8940 | hello@opalmeetings.com | skype: cpanetièrè



idiosyncratic collection with surprising value for a meeting's focus surprisingly affordable



city - locale the Caribbean - Puerto Rico, on 3 miles of deserted beach with jungle | 15 mins from USA direct flights | Aguadilla is the airport & town

style casual - laid back | non- glitzy | family welcoming | Caribbean plantation style with stucco and coral block | corrugated roofs | gardens - lush, verdant | palms everywhere |condos - plantation decor with local art & sculpture| suitable for casual buy-out

most useful to a planner for team building | low cost - low key incentives - not showy yet it is as unique as 3 miles of deserted beach can be

hotel name Villa Montana Beach Resort | ★ ★ ★ ★ 3.5 Stars

address Aguadilla, Puerto Rico - the North West corner of island

location benefits for a group - at a glance 4 hrs from NYC | direct flights on Continental and Jet Blue from Newark, NYC, Orlando | small airport - easy to get through | no car needed |resort is self contained | all watersports can be done from own beach | team building in jungle

opal hotel senior sales cindy perkins, director | tel US +1 800 965 8940 cperkins@opalmeetings.com

unique features seclusion - nature > back to basics | set on 35 acres | villas and condos | all activities right from site | 3 miles of deserted beach | world class surfing

amenities all the usual - but we are in nature so, yes, there are salamanders decorating the walls, heaps of birds talking and parrots roosting

restaurants 2 restaurants > over/next to the beach and sea > fine and casual - interwoven with garden | "O" - tapas kasbah - international exotic

activities from hotel: - scuba - learners to expert (blue hole right off beach) | snorkel | world class surfing - learners to expert | jungle & beach trail rides | hiking | eco-canyoneering | tennis | rock climbing | mountain biking | kayaking

guest rooms 73 in varied configurations > hotel rooms 30 | the suites & villas vary from one to three bedrooms

meeting spaces 1500 sq feet with lots of added possibilities > break-outs and conferences in villa living rooms, additional tenting is easily done on 35 acres of gardens: 2 actual spaces available > the 2 restaurants

audio visual in house and from San Juan as needed

airport & drive air: Aguadilla (AGL) - 5 miles > \$35 taxi | San Juan is 90 mins

eco-environment water conservation | own organic garden

community responsibility from opal meetings - 5% of revenue is donated to our own volunteer charity foundation - **panetière partners:** *improving lives through empowerment & education*



www.opalmeetings.com

opal hotel collection: US + 1 800 965 8940 | hello@opalmeetings.com | skype: cpanetiere

values & affordability